

R2

Bug



This bug is a scaled down version of a previous knitting pattern (The 'Beetle' Beetle). It isn't a specific species of insect which is why it has been given the name bug. It doesn't have wings because I can't figure out a way to make knitting transparent. Yet.

You will need:

double knit yarn in black and one colour • toy stuffing
4 x double ended knitting needles (3mm) • tapestry needle • scissors

Pattern (Legs – Make 3):

Cast on 2 in black yarn.

I-cord 8 rows.

Turn and knit across the row (as for work in the flat) 3 times. At the end of the third row do not turn.

I-cord 18 rows.

Turn and knit across the row (as for work in the flat) 3 times. At the end of the third row do not turn.

I-cord 8 rows. Thread yarn through remaining sts.

Pattern (Abdomen – Make 1):

Cast on 4 in black yarn, join into round.

Round 1: p2, k2 (4)

Round 2: [k1, inc, k1] x 2 (6)

Round 3: p3, k3 (6)

Round 4: [k1, inc] x 2, k1, [k1, inc] x 2, k1 (10)

Round 5: p5, k5 (10)

Round 6: k6, inc, k3, inc, k1 (12)

Round 7: p5, k7 (12)

Round 8: k1, inc, k3, inc, k2, inc, k5, inc, k1 (16)

Round 9: p7, k9 (16)

Round 10: k8, inc, k7, inc, k1 (18)

Round 11: p7, k11 (18)

Round 12: k1, inc, k5, inc, k2, inc, k9, inc, k1 (22)

Round 13: p9, k13 (22)

Round 14: k10, inc, k11, inc, k1 (24)

Round 15: p9, k15

Round 16: k9, sl1, k13, sl1

Repeat rounds 15 and 16 twice more (six rounds in total).

Round 21: p9, k15 (24)

Round 22: k1, k2tog, k4, k2tog, k1, k2tog, k10, k2tog (20)

Round 23: p7, k1, k2tog x 2, k4, k2tog x 2 (16)

Round 24: k1, k2tog, k2, k2tog, k1, k2tog, k4, k2tog (12)

Cast off.

Pattern (Thorax – Make 1):

Cast on 6 in colour, join into round.

- Round 1: p3, k1, inc, k1, inc, k1 (8)
Round 2: k1, inc, k1, inc, k2, inc, k3, inc, k1 (12)
Round 3: p6, k1, inc, k5, inc, k1 (14)
Round 4: k6, inc, k7, inc, k1 (16)
- Round 5: p5, k11
Round 6: k5, sl1, k9, sl1

Repeat rounds 5 and 6 twice more each (six rounds in total).

- Round 11: p5, k11 (16)
Round 12: k6, k2tog, k6, k2tog (14)
Round 13: p5, k1, k2tog, k4, k2tog (12)
Round 14: k1, k2tog, k2tog, k1, k2tog, k2, k2tog (8)
Round 15: p3, k1, k2tog, k2tog (6)

Cast off.

Pattern (Head – Make 1):

Cast on 4 in black yarn, join into round.

- Round 1: p2, k1, inc, k1 (5)
Round 2: k1, inc, k2, [inc, k1] x 2 (8)
Round 3: p3, k1, inc, k3, inc, k1 (10)
- Round 4: k –
Round 5: p3, sl1, k5, sl1

Repeat rounds 4 and 5 once more each (four rounds in total).

- Round 8: k –
Round 9: p3, k1, k2tog, k2, k2tog (8)
Round 10: [k1, k2tog] x 2, k2tog (5)
Round 11: p2, k1, k2tog (4)

Cast off.

Pattern (Elytra – Make 2):

Cast on 6 in colour, join into round.

- Round 1 (and all odd rounds to 20*): k –
- Round 2: k1, inc, k4, inc, k1 (8)
Round 4: k1, inc, k6, inc, k1 (10)
Round 6: k1, inc, k8, inc, k1 (12)
Round 8: k1, inc, k10, inc, k1 (14)
Round 10: k1, inc, k12, inc, k1 (16)

Round 12: k1, inc, k14, inc, k1 (18)

Rounds 14 to 18 (even only): sl1, k16, sl1 (18)

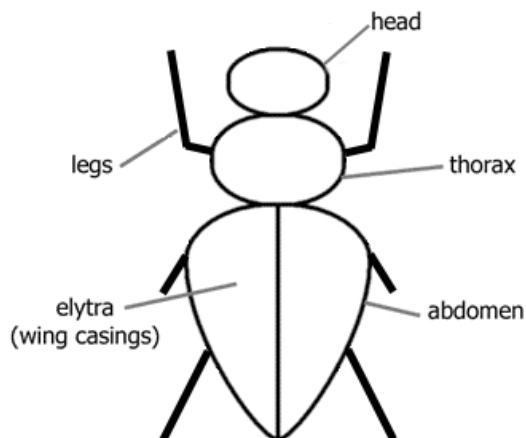
- Round 20*: k1, k2tog, k13, k2tog (16)
Round 21: k1, k2tog x 2, k7, k2tog x 2 (12)
Round 22: k1, k2tog x 2, k3, k2tog x 2 (8)

Cast off.

Making Up:

Fill the head, thorax and abdomen with toy stuffing and sew closed. The elytra remain unstuffed and just need to be pressed flat. Sew the cast off stitches closed.

Line up the head, thorax and abdomen. Run a thread through the three stuffed pieces to hold them together. Fix more firmly in place with a couple of extra stitches on the underneath.



The legs have been knitted in pairs. Sew the first pair across the bottom of the thorax so that one leg sticks out on either side with the knees pointing upwards. Sew the other two pairs of legs to the abdomen so that the knees point down.

Position the elytra so that they cover the top of the abdomen. Fix them in place with a few stitches at the top edge only so that they can be opened and closed.

Lose any remaining loose ends.

Notes:

Abbreviations

[] x number	Repeat the section in square brackets the required number of times.
(number)	Gives the total number of stitches you should have on needle by the end of the row.
inc	Pick up a loop from the previous row and knit into it to make a stitch (+1 stitch).
k number	Knit this number of stitches.
k –	Knit every stitch to the end of the row.
k2tog	Knit the next two stitches together (-1 stitch).
p number	Purl this number of stitches.
sl number	Slip this number of stitches purl wise.

Needle/Yarn Size

As with most ODDknit patterns the yarn and needle sizes in the "you will need" section are just a guide. Feel free to improvise with whatever needles and yarn you have lying around - that's half the fun!